



Master's programme in Global Supply Chain Management and Change

Innovative entrepreneurship in the worldwide supply chain

Language of
instruction:
English



Innovative entrepreneurship in the worldwide supply chain

Are you interested in supply chain management processes and how they can be improved? Are you a creative thinker who can innovate to achieve a competitive edge? Do you aspire to set up your own business, or make a real difference to a company that wants to compete in a dynamic, international marketplace? If so, this programme can drive your entrepreneurial ambitions.

Why should you choose Global Supply Chain Management and Change?

In an increasingly globalised economy, more and more production is outsourced. This means that innovative supply chain management is key to commercial survival. From September 2009, the Faculty of Economics and Business Administration will be offering a new programme in Global Supply Chain Management and Change. This programme meets the growing demand for supply chain management experts who have a deep understanding of the role of innovation in business success. The programme is taught in Venlo, an entrepreneurial city about 80 km from Maastricht. You benefit from Maastricht University's outstanding academic resources and expertise, while having the opportunity to put your knowledge into practice almost immediately in the region's industrial centre.

This master's programme is a multi-disciplinary combination of supply chain management, innovation and entrepreneurship. The knowledge and skills you gain will give you the edge when it comes to setting up your own business. You will also be perfectly positioned to manage the strategic change projects in the supply chains of global organisations that will put them ahead of the competition. Links to companies in the area mean you will analyse real business cases and gain practical experience. Moreover, your master's thesis should be based on a real-life innovation or an entrepreneurial project.

What will you learn?

Having completed this programme, you will be able to:

- maintain an overview of every link in the supply chain;
- carry out effective supply chain planning;
- deal effectively with suppliers, buyers and customers;
- understand global business issues;
- identify areas of improvement and drive change processes;
- work in and manage (international) teams.

Is Global Supply Chain Management and Change right for you?

As well as the standard admission requirements (see page 4), you should:

- be internationally minded and open to new ideas;
- see the opportunities of change rather than the threats;
- be an analytical thinker with a desire to see theory in practice.

A background in supply chain management, logistics or business is an advantage but not required.

What are your career prospects?

As a graduate of this new programme, many opportunities will be open to you. Your business and managerial skills will put you on the fast track to a senior position in a range of organisations. These include the project or staff departments of global retail and logistics companies. You will also graduate with a strong sense of entrepreneurship, which will be invaluable if you decide to start your own company.

We expect graduates to find positions in:

- multinationals;
- start-ups;
- consultancy firms.

Course outline

Global Supply Chain Management and Change			
Term 1	1	Supply Chain Operations	Methods and Methodology
	2	Supply Chain Relationships	Entrepreneurship and Innovation
	3	Skills Training: Project and Change Management	
Term 2	4	ICT Systems and Services	Business and Supply Chain Strategy
	5	Skills Training: Writing a Business Plan	Writing the Master's Thesis
	6	Completing the Master's Thesis	

NB. The details of this programme could change; before applying, please check www.unimaas.nl/mastersinvenlo for the latest information.

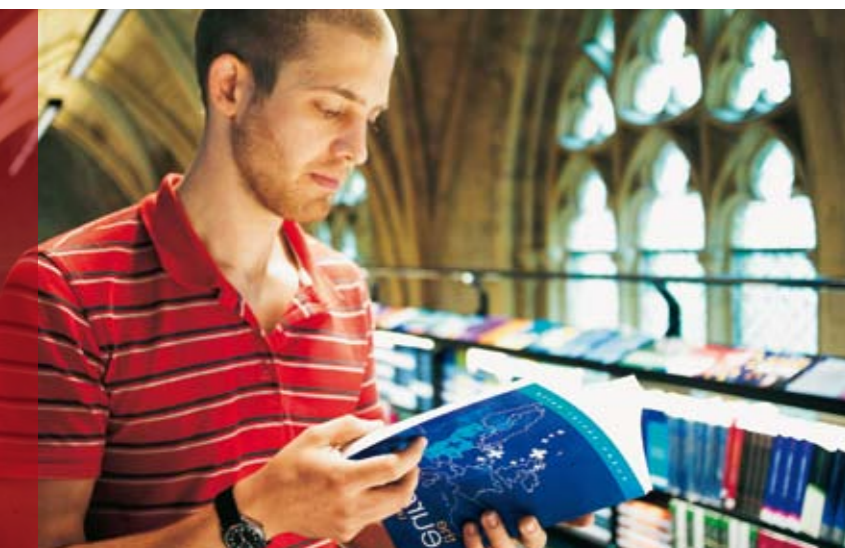
Venlo is the perfect starting point for a successful career in the dynamic world of global supply chain management. Why? Because it is strategically situated between the harbours of Rotterdam and Antwerp and the European 'hinterland'. Venlo is also home to many logistics service providers' headquarters and distribution facilities. It is no surprise that the city was recently voted the Netherlands' 'supply chain hotspot'.

Fast facts

- **Programme:** MSc Global Supply Chain Management and Change
- **Language of instruction:** English
- **Duration:** 1 year full time
- **Start date(s):** once yearly, in September
- **Study load per week:** 8 hrs classes; 12 hrs group work; 20 hrs individual study. Total 40 hours
- **Learning method:** problem-based learning; guest lectures; presentations; assignments
- **Assessment method:** written exams; final papers; group participation
- **Options:**
 - double-degree programme with EDHEC
 - extended degree programme (1.5 years) including internship

Further information:

- www.unimaas.nl/mastersinvenlo
- code.unimaas.nl for course information
- **Student Recruitment and Communications Office:** +31 43 388 2055 or masterinfo@efb.unimaas.nl



Admission requirements

For bachelor's graduates from Maastricht University's Faculty of Economics and Business Administration

If you have completed a bachelor's programme at Maastricht University's Faculty of Economics and Business Administration, you may qualify for the continuing master's programme in Global Supply Chain Management and Change.

You must submit the following documents in order to apply for the continuing MSc Global Supply Chain Management and Change programme:

- A graduation request (see page 5 for application procedure).
- A registration form for the continuing master's programme (see page 5 for application procedure).
- A copy of your passport.
- A bachelor's degree from Maastricht University's Faculty of Economics and Business Administration that gives direct access to the MSc Global Supply Chain Management and Change programme.

The bachelor's programmes currently giving access to the continuing master's programme in Global Supply Chain Management and Change are as follows:

- BSc Economics
- BSc International Business

Note that bachelor's graduates from Maastricht University's Faculty of Economics and Business Administration who do not qualify for the continuing MSc Global Supply Chain Management and Change programme have to meet the admission requirements for the selective master's programme as outlined below.

For other bachelor's graduates

If you have completed a bachelor's programme at an Institute of Higher Education other than the aforementioned, you should apply for the selective master's programme in Global Supply Chain Management and Change.

You must submit the following documents in order to apply for the selective MSc Global Supply Chain Management and Change programme:

- A completed application form (see page 6 for application procedure).
- A copy of your passport.
- A bachelor's degree in a relevant field, together with a certified transcript of exam subjects and grades.
- A letter describing your motivation for studying MSc Global Supply Chain Management and Change at Maastricht University's Faculty of Economics and Business Administration.
- As proof of analytical writing and quantitative reasoning abilities, a satisfactory Graduate Management Admission Test (GMAT) score or Graduate Record Examination (GRE) score is mandatory. A satisfactory GMAT score implies a score of at least 450. A GMAT score between 450 and 600 will be evaluated in combination with the other information that needs to be provided when submitting an application. A GMAT score of 600 is sufficient for admission, provided that the other requirements are fulfilled. A satisfactory GRE score implies an average score of 450, analytical writing score excluded. You are required to indicate the Maastricht University code number on the test form while taking the GMAT or GRE test. The code number is 2WH-4N-65 for the GMAT and 7102 for the GRE test. Please be aware that the GMAT and GRE test scores are only valid for two years.

- As proof of English language proficiency, a Test of English as a Foreign Language (TOEFL) score or International English Language Testing System (IELTS) score, or proof of being a native English speaker, is mandatory if you are a national from a country that is not a member of the European Union (EU) or European Economic Area (EEA). A satisfactory TOEFL score implies a score of at least 575 on the paper-based test, 233 on the computer-based test or 90-91 on the internet-based test. A satisfactory IELTS score implies a score of at least 6.5. You are required to indicate the Maastricht University code number on the test form while taking the TOEFL test. The code number is 7102 for the TOEFL test. No code number is required for the IELTS test. Please be aware that the TOEFL and IELTS test scores are only valid for two years.

You may qualify for exemption from the GMAT or GRE entry requirement if you have passed at least four courses from the final BSc International Business courses offered at Maastricht University's Faculty of Economics and Business Administration.

Application procedure

For bachelor's graduates from Maastricht University's Faculty of Economics and Business Administration

If you qualify for the continuing master's programme in Global Supply Chain Management and Change (see page 4 for admission requirements), you should complete a graduation request and submit it online. You should print and complete the registration form for continuing master's programmes and send it with all documents relating to the admission requirements to the Board of Examiners Office. The address is indicated on the registration form. After the receipt of a complete application has been acknowledged, your file will be assessed. Within approximately two weeks you will hear whether you have been admitted to the programme.

To download the graduation request and the registration form for continuing master's programmes, please visit:

www.unimaas.nl/feba/application

Only complete files will be evaluated and considered for admission. An application will be considered incomplete if any of the following items are missing:

- a graduation request;
- a registration form for the continuing master's programme;
- a copy of your passport;
- a bachelor's degree from Maastricht University's Faculty of Economics and Business Administration that gives direct access to the MSc Global Supply Chain Management and Change programme.

However, if you have not yet been awarded your bachelor's degree at the time of evaluation, you can be admitted conditionally. You have to fulfil all educational requirements of your bachelor's programme before the start of the master's programme and submit proof of this within eight weeks after the start of the master's programme in order to obtain unconditional admission.

Note that bachelor's graduates from Maastricht University's Faculty of Economics and Business Administration who do not qualify for the continuing MSc Global Supply Chain Management and Change programme have to follow the application procedure for the selective master's programme as outlined below.



For other bachelor's graduates

If you have completed a bachelor's programme at an Institute of Higher Education other than the aforementioned (see page 4 for admission requirements), you should complete an application form and submit it online. You should scan all documents relating to the admission requirements and send these to the Board of Admissions Office via boamasters@efb.unimaas.nl. After the receipt of a complete application has been acknowledged, your file will be assessed. Within approximately two weeks you will hear whether you have been admitted to the programme.

To download the application form, please visit:

www.unimaas.nl/feba/application

To convert your documents to PDF format, please visit:

www.primopdf.com

If you cannot provide the Board of Admissions Office with scanned versions of all documents relating to the admission requirements, you can send copies of all documents via regular mail. The address is indicated on the back cover of this folder.

Only complete files will be evaluated and considered for admission. An application will be considered incomplete if any of the following items are missing:

- the application form;
- a copy of your passport;
- a bachelor's degree with a certified transcript of exam subjects and grades;
- a letter of motivation;
- the GMAT or GRE test scores;
- the TOEFL or IELTS test scores if applicable.

However, if you have not yet completed your bachelor's programme when applying for the MSc Global Supply Chain Management and Change, you may send your most recent transcript of exam subjects and grades. If you have not yet received your bachelor's degree at the time of evaluation, you can be admitted conditionally. You have to submit your bachelor's degree with a certified transcript of exam subjects and grades before the start of the master's programme in order to obtain unconditional admission.

If you would like to participate in the free GMAT workshop offered by the Faculty of Economics and Business Administration, you may send your application without the GMAT test results. You should then self-report your GMAT score after taking the test.

Application deadlines

For bachelor's graduates from Maastricht University's Faculty of Economics and Business Administration

If you're applying for the MSc Global Supply Chain Management and Change programme starting in September, you must meet the following application deadline:

- 1 July

Note that bachelor's graduates from Maastricht University's Faculty of Economics and Business Administration who do not qualify for the continuing MSc Global Supply Chain Management and Change programme have to submit their application for the selective master's programme before the application deadlines as outlined below.

For other bachelor's graduates

If you're applying for the MSc Global Supply Chain Management and Change programme starting in September, you must meet the following application deadlines:

- 1 July for students from EU/EEA countries and Switzerland;
- 1 May for students from other countries, who need a visa or residence permit.

Further information:

- Board of Examiners Office: www.surfyourself.nl
- Board of Admissions Office: +31 43 388 3628 or boamasters@efb.unimaas.nl

An NVAO accreditation procedure was successfully completed for this degree programme, and it is currently awaiting the approval of the Ministry of Education, Culture and Science (OCW).





© 2008 Faculty of Economics and Business Administration, Maastricht University, PO Box 616, 6200 MD Maastricht, the Netherlands.
Text: The Write Company, Amsterdam | Photography: Pascal Hermans, Haseit, Lorraine Bodelwes, Maastricht, Gregor Ramakers, Maastricht,
Carin Willemsen / Coproductions, Sittard | Concept and design template: Vormgevingssociëteit BV, Hoog-Keppel |
Layout and production: Diameda Minds, Maastricht | Final editing: Jessica Brouwer
Although this brochure was made with the utmost care, no rights can be derived from it.

www.unimaas.nl

Based in Europe, focused on the world. Maastricht University is a stimulating environment. Where research and teaching are complementary. Where innovation is our focus. Where talent can flourish. A truly student oriented research university.

Contact information

Maastricht University
Faculty of Economics and
Business Administration
Tongersestraat 53
PO Box 616
6200 MD Maastricht
The Netherlands

Student Recruitment and
Communications Office
Phone: +31 43 388 2055
Email: masterinfo@efb.unimaas.nl
Appointment:
www.unimaas.nl/feba/contact

Board of Admissions Office
Phone: +31 43 388 3628
Email: boamasters@efb.unimaas.nl

